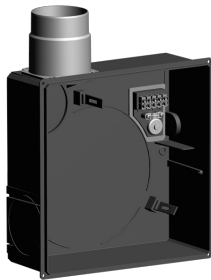


Technical Data Sheet

CODE 11562

QE-B I VK90

Centrifugal duct fans

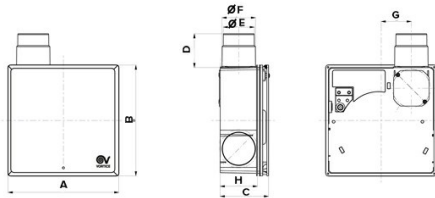


Certifications

TECHNICAL AND PERFORMANCE DATA

Weight (Kg) 0,62

DIMENSIONS



Size A (mm)	<u>277</u>
Size B (mm)	<u>277</u>
Size C (mm)	<u>135</u>
Size D (mm)	<u>80</u>
Size E (mm)	<u>73</u>
Size F (mm)	<u>79</u>
Size G (mm)	<u>71,5</u>
Size H (mm)	<u>94</u>

PER INFORMAZIONI:

Servizio al Cliente: tel +39 02 90699395 premendo 1 dopo messaggio registrato (consulenza su prodotti e impianti)

Pre & Post Vendita: fax +39 02 90699302

Email prevendita: prevendita@vortice-italy.com

Technical Data Sheet

CODE 11562

QE-B I VK90

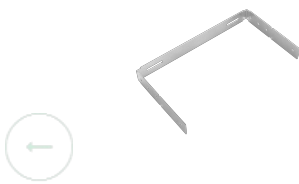
Centrifugal duct fans



DESCRIPTION

- Basic encasement for recessed installation, made of ABS plastic.
- Stainless steel spigot, integrating the K90 fireproof valve, TUM certified according to DIN 18017-3.
- Backdraught shutter compliant with DIN 18017-3, as certified by TUV German Institute.
- Spigot nominal diameter: 80 mm.
- Square frame to prevent entry of dirt and plaster.
- Connection port to connect a spigot (QE-AD cod. 21118, available as accessory) able to extract air from a second room.
- Possibility of drywall installation.

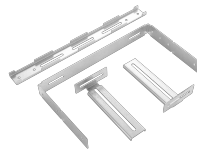
ACCESSORIES



QE-MH
Code 24127



QE-TEK
Code 24128



QE-UMB
Code 24094



QE-SRK
Code 24129

PER INFORMAZIONI:

Servizio al Cliente: tel +39 02 90699395 premendo 1 dopo messaggio registrato (consulenza su prodotti e impianti)

Pre & Post Vendita: fax +39 02 90699302

Email prevendita: prevendita@vortice-italy.com